

Decisions

Instructor: Dmitri A. Gusev

Fall 2007

CS 113: Introduction to Computers

Lecture 9, October 25, 2007

Conditions

- A ***condition*** is an expression involving *relational operators* (such as $<$ and $=$) that is either true or false. Conditions also may include *logical operators* (such as And, Or, and Not).
- The relational operator *less than* ($<$) can be applied to both numbers and strings. The string *a* is said to be less than the string *b* if *a* precedes *b* alphabetically (lexicographically). Digits precede uppercase letters, which precede lowercase letters.

Relational Operators

Mathematical Notation	VB Notation	Numeric Meaning	String Meaning
=	=	equal to	identical to
≠	<>	unequal to	different from
<	<	less than	precedes alphabetically
>	>	greater than	follows alphabetically
≤	<=	less than or equal to	precedes alphabetically or is identical to
≥	>=	greater than or equal to	follows alphabetically or is identical to

Logical Operators

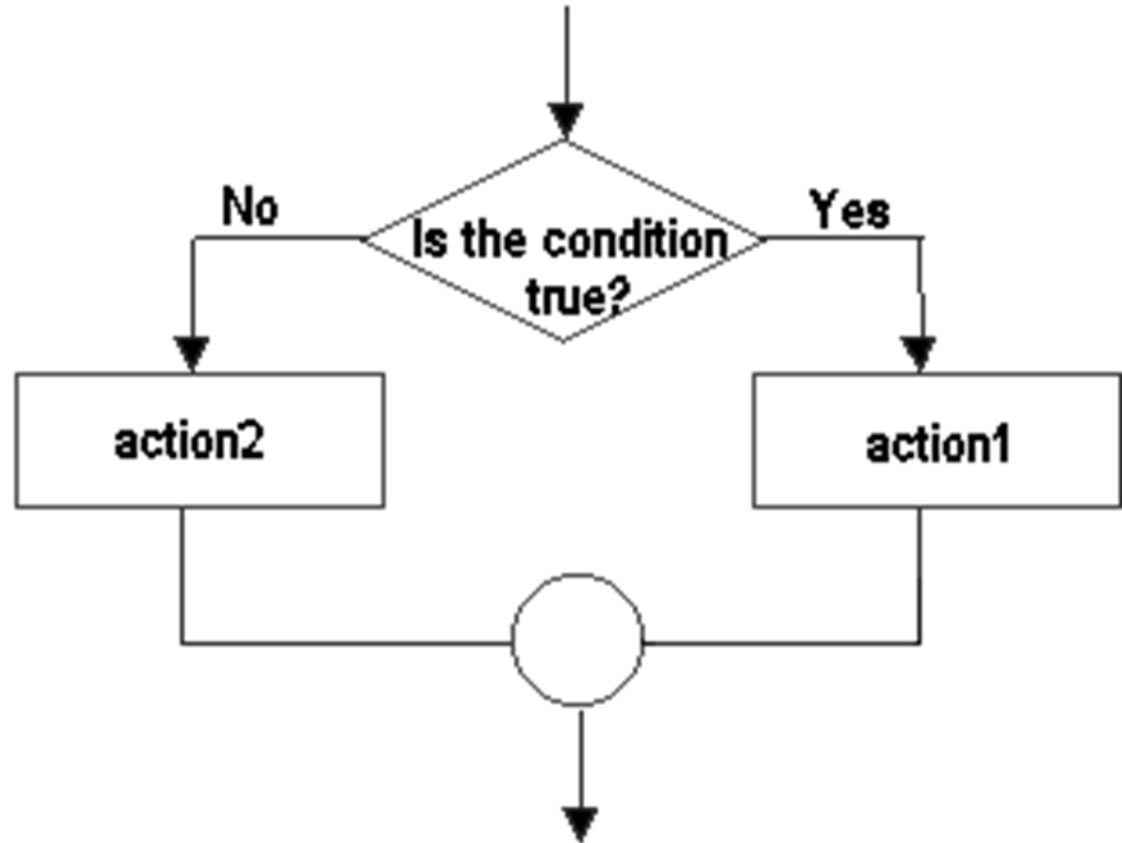
- *cond1* And *cond2*
- *cond1* Or *cond2*
- Not *cond1*

Operator Precedence

- First, all *arithmetic operations* are carried out, and then all expressions involving *relational operators* are evaluated (to true or false). The *logical operators* are next applied, in the following order: Not, then And, then Or. Evaluation on the same precedence level proceeds left-to-right.
- The order of computation can be altered using parentheses.

If Block

If *condition* Then
 action1
Else
 action2
End If



If Block: Example

```
If a<b Then      'This If block can be improved
  If c<5 Then    'using the And operator
    picBox.Print "hello"
  End If        'The Else clause is optional!
End If
```

Elseif Clauses

```
If condition1 Then  
    action1  
Elseif condition2 Then  
    action2  
Elseif condition3 Then  
    action3  
Else  
    action4  
End If
```

Constructs in which an If block is contained inside another If block are called **nested** If blocks.

Single-Line If Statement

If condition Then action1 Else action2

- No **End If** is needed in this special case.